

Nielson NIGERIA LIMITED

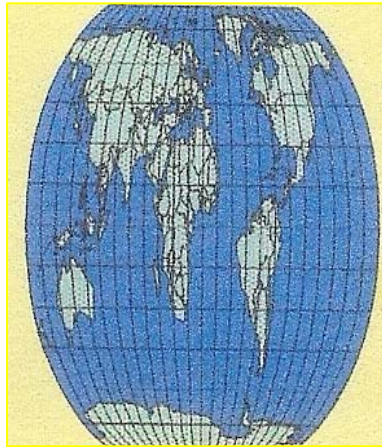
COMPREHENSIVE SURVEYING, PLANNING SERVICES AND OFFSHORE TECHNOLOGY

No. 10 B, (Estate) Nnaworlu Street, Off Woji Road., Rumuogba, P.O.Box 8669, Port Harcourt, Rivers.

08035518988, e-mail: nielson_nig@yahoo.com info@nielsonngr.com support@nielsonsonngr.com www.nielsonngr.com

NIELSON CORPORATE

PROFILE



A WORLD OF DIFFERENCE

VISION STATEMENT

NIELSON NIGERIA LIMITED is aspiring to be among the leaders in Geo-referenced information services provider, with effective presence in Nigeria, West Africa and indeed Oil&Gas, Engineering and Building industry worldwide.

MISSION STATEMENT

NIELSON LIMITED is a **Customer-Oriented** and **Progressive Oil and Engineering Company**. Our aim is to provide high quality professional service to our client irrespective of all constraints while maintaining efficiency and profitability.



CONTENT

	PAGE
1. Vision Statement	1
2. Mission Statement	1
3. Corporate Objective	3
4. Quality Management	3
5. Quality Assurance Principle	4
6. Health and Safety Policy	4
7. Introduction	5
8. Organization and Management	6
9. Organizational Chart	7
10. Scope of services Offered	8
11. Comprehensive surveying services	8
12. Civil and Building works center	10
13. Consultancy and project Management	11
14. Project personnel	11
15. Profile of Company Executives	13
16. List of equipment	16
17. List of previous project executed	19

The above **Vision** and **Mission** will be achieved with the following objective.

CORPORATE OBJECTIVES

- Improve the quality and responsiveness of service to customers.
- Update the quality, professionalism and productivity of staff.
- Develop methodology for making use of available emerging technology to deliver quality services to clients.
- Adhere strictly to the professional code of ethics and conducts.
- Develop management system, embodying policies, and work condition that would ever continue the well being of staff.
- Improve the urban and national coverage of services and her image worldwide.
- Contribute to the social and economic development of the community in which we operate in a sustainable manner.

QUALITY MANAGEMENT PRINCIPLE

We define quality as one that is fit for the intended use as perceived by the users.

NIELSON (NIGERIA) LIMITED shall meet the customer's need and conform to the various agreed requirement placed upon it. Our **QUALITY MANAGEMENT PRINCIPLE** therefore, comprises of all deliberate actions taken to ensure that customer requirement are identified and met in such a manner as to take maximum profit advantage. Our procedure details were, **WHO, WHEN, WHERE and HOW** of a job. Our operations are based on total quality management **.(T.Q.M)**

QUALITY ASSURANCE PRINCIPLE

We strive to ensure that planned and systemic actions necessary to provide adequate confidence in our services are undertaken. The quality assurance methods shall be applied from the very start of any project until the delivery of the final product to the satisfaction of the client.

All operations of **NIELSON (NIGERIA) LIMITED** are carried out using documented procedures and work instructions as to ensure professional working standard. (ISO 9001).

Our policy shall be to deliver products and services in accordance with specification and in compliance with statutory authority requirement. Detail of this can be found in our quality assurance manual.

HEALTH AND SAFETY POLICY

The concern of **NIELSON** in the conduct of all her operation, is the protection of all her personnel, materials and equipment. Our employees must be regularly acquainted with the basic health, safety and environment guidelines to be complied with when doing all jobs. Detail of this can be found in our SAFETY manual.

Our safety slogan is **SAFETY FIRST ALWAYS**

.....

FAKOLOGBON. A. TUNDE
MANAGING DIRECTOR.

.

INTRODUCTION

Different challenges demand good ability to perform. Whatever the project, wherever the location, **NIELSON LIMITED** can execute Oil & Gas related Engineering Service In Land,, Swamps and Offshore, **NIELSON** makes *a world of difference*.

NIELSON LIMITED was incorporated to carry out specialised services in the field of **Geo-Reference Information management, Comprehensive Surveying, Hydrographic, Geotechnical Engineering Survey, Geophysical Exploration, Project Management ,Consultancy and Asset procurement.**

The company was conceptualised to compete favourably with related companies both local and foreign, operating in Oil, & Gas, Engineering and allied industries in Nigeria. We are very much available for support services in the area of infrastructural development across the nation as well as mapping services.

Our policy of merging quality organization to achieve massively in operating areas has lead to our steady growth in **LAND, SWAMP and MARINE and OFFSHORE** survey services.

Though our intensive and independent operating base is in **Port Harcourt** in the Niger Delta area, we offer solutions to our client's in any part of Nigeria, combining technology, logistics and project management.

The commitment to quality and safety is a cornerstone of **NIELSON'S** activities and forms an integral part of her workers training.

All the executives and managerial staff have been key functionaries in leading Oil industries in Nigeria, government offices and parastatals. The Directors has a lofty intention to continue a level of investment in latest techniques and technology, which will ensure an unrestrained growth. Our staff of professionals includes Surveyors, Hydrographers, Geophysicists, Geotechnical Engineers, Computer specialist, Civil, and Electrical Engineers.

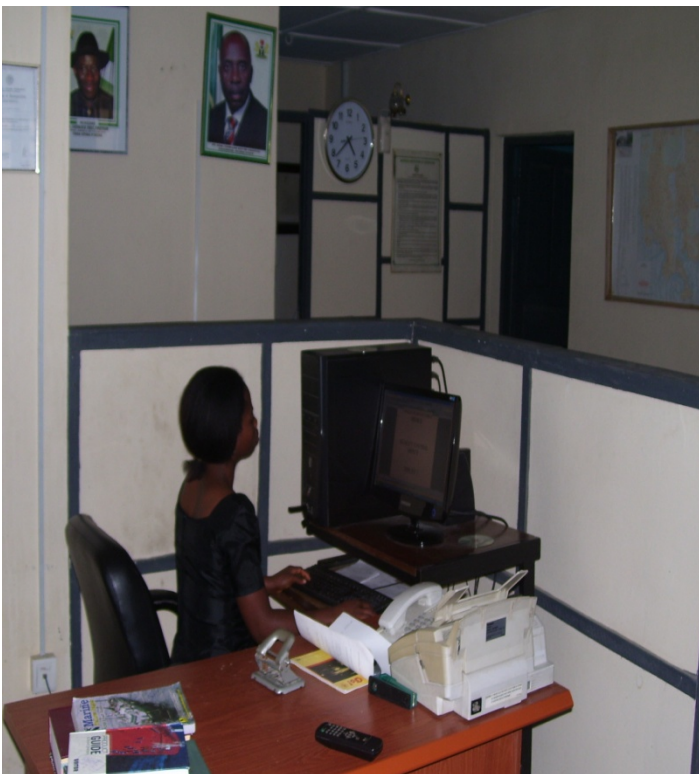
ORGANIZATION AND MANAGEMENT

A Managing Director, who is also the Chief Executive Officer, heads **NIELSON NIGERIA LIMITED**, he is Supported by Executive Director, General manager and other subsidiary heads of divisions that are designated as Managers. The entire management is being covered by an able board

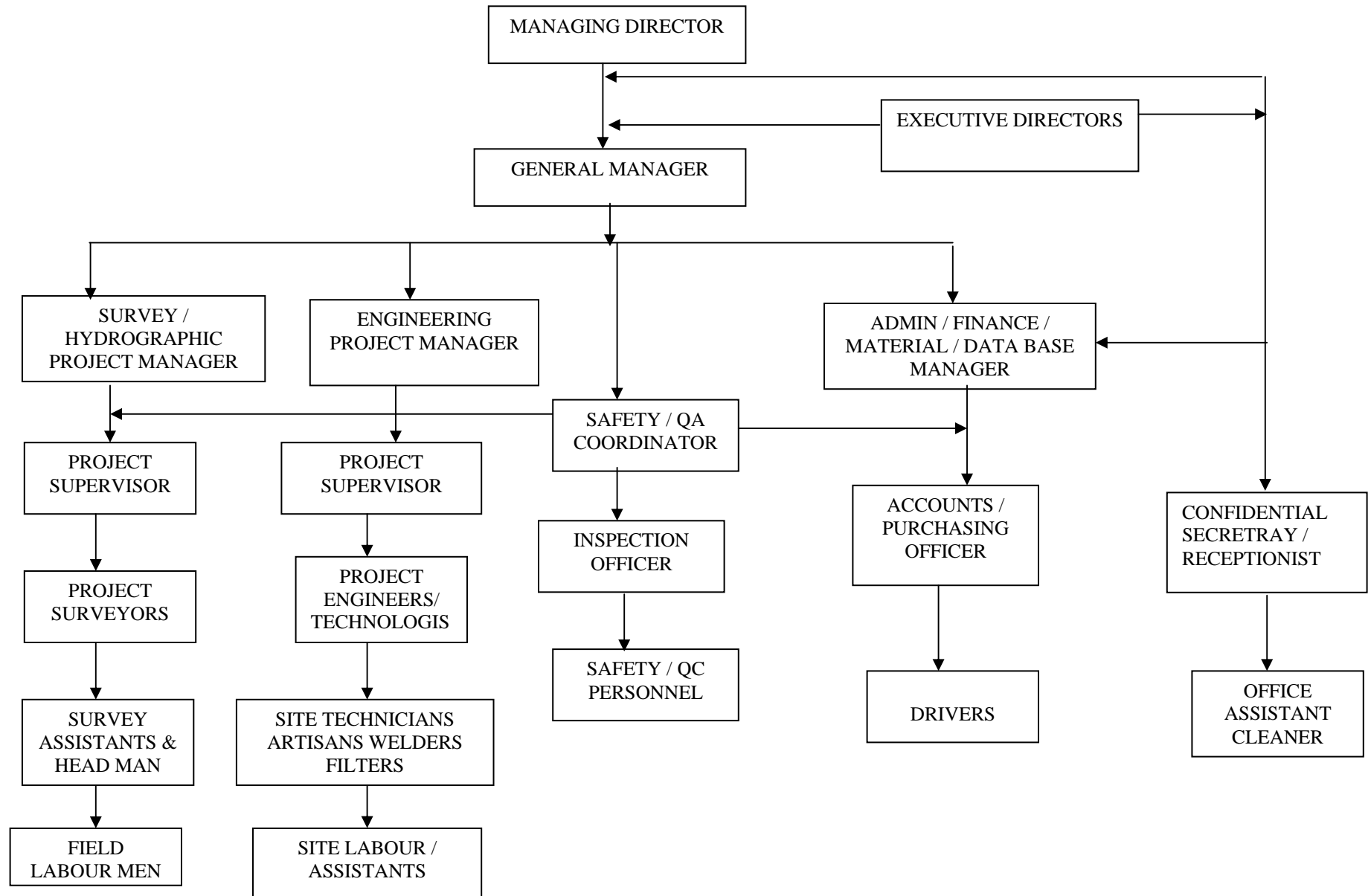
The management structure of the company is build with the aims of achieving maximum efficiency, utilization of human and natural resources to ensure a continue growth and success of the company.

The multi-disciplinary nature of **NIELSON LIMITED** ensures that projects are viewed from different perspectives, an amalgamation of which produces the probable and most efficient result.

NIELSON operates under the following schematically represented flow chart.



ORGANIZATIONAL CHART



SCOPE OF SERVICES OFFERED

NIELSON LIMITED has a comparative advantage in **Comprehensive Surveying, Offshore, Hydrographic, Geotechnical Engineering, Project Management, Consultancy and Asset Procurement**. The company offers a wide range of services through the operational departments

(A). COMPREHENSIVE SUREYING SERVICES DEPARTMENT

NIELSON has experience and expertise to provide technologies and services related to the managing of geographically reference information, specifically in, **MAPPING, SUREYING AND GEOGRAPHICAL INFORMATION SYSTEM. (GIS)**

The company supplies services in the field of acquisition processing interpretation, storage, retrieval and maintenance of geographical data.

The service range from conventional Land, Swamp, Geophysical and Hydrographic Surveying to Digital mapping projects, Geotechnical Engineering, Computer Aided Drafting, GIS, Remote Sensing and photogrammetric technologies

We conduct surveys and geotechnics on Land, Swamps and offshore using latest technologies.

Various levels of expertise are available in Geodesy, Hydrographic surveying, underwater Engineering, Geophysics Geotechnical and Computer services.

Our clients include oil & Gas companies and Oil & Gas service companies, Dredging companies, utilities companies, Government agencies, planners, Engineering contractors and individuals involved in making decision regarding the use of land and environmental resources, depending on complete and accurate survey data.

OIL & GAS PIPELINE & LOCATION DEVELOPMENT SERVICES

NIELSON LTD undergoes various oil & Gas field development survey services, which include but not limited to

- Preliminary investigation survey to present complete picture of field situation to give advice and enhance decision making
- **Full preparation(FP) surveys**
- **Pipeline route surveys (R.O.W.)**

- Pipeline/location and Engineering facilities AS-BIULT survey to provide comprehensive summary for future facility maintenance and management.
- On/Offshore geotechnical engineering survey.
- Bathymetric Survey
- Location Survey
- Electrification Survey
- Geophysical Exploration

OFFSHORE AND MARINE SURVEYS

We provide services in Hydrographic, marine and bathymetric surveys for Nigeria Oil& Gas industry. We undertake Site Surveys Rig positioning Route Survey Pipe- laying sand search, underwater Engineering to Civil and Oil industry with the use of modern hydrographic equipment We use both satellite links and terrestrial radio link to broadcast and receive Differential G.P.S data

TOPOGRAPHICAL, CADASTRAL AND UTILITIES SURVEY

NIELSON services in respect of utilities management involves

- Survey services in various aspects of system definition design and conception.
- Customization of GIS system as dedicated facility management system
- Utility data facts gathering and data validation.

CADASTRAL

Our service in property survey and registration include:

- Individual property survey, charting and Deposition with the statutory authority.
- Layout planning and survey.
- Customization of GIS as cadastral information system for integrity control and assurance for certificate of occupancy administration.
- Provision of street guide maps for cities and major town for Township administration.

AUTOMATED CARTHOGRAPHY AND DIGITAL MAPPING

Utilization of computer technology enables **NIELSON NIG LTD** to produce their maps and plans in automated Digital formats. Information is presented in user defined format in full range of industrial standard. We are well experienced in Digitizing logic and technique from

1. Source with a digitizing table
2. Semi-automatic from scanned sources
3. Our deliverables are geo-referenced data set corresponding to the target data model.



GEOGRAPHICAL INFORMATION SYSTEM (GIS/GIM)

NIELSON NIG. LTD provides a comprehensive range of GIS services based on our experience in surveying and mapping coupled with our state-of-the-art equipment, software and specialized staff. We handle application building on Intergraph and ARC INFO/ARC CAD with associated use of ORACLE relational data- base. We also have additional software capabilities to handle the following special applications such as;

1. General data format conversions
2. Coordinate conversions
3. Coordinate management systems
4. Data integrity checkers

MAPS, PLAN

Maps and Maps related information are significant factors in planning, execution and decision making related to Oil & Gas field development and Engineering. Development of natural and environmental resources and utilities all depends on up-to-date comprehensive and reliable maps.

GEOTECHNICAL ENGINEERING SURVEY

We have experienced team geotechnical engineers, drillers and other support personnel providing soil investigation services with state- of-the-art drilling facilities.

CONSTRUCTION SUPPORT

We have experienced team of professionals **Surveyors** providing state- of-the-art survey support for large and complex engineering projects such as Pipeline construction Gas plant construction Refinery Roads, highways, airports, Rural water works etc.

We provide support in

- **CONCEPTUALIZING, DEFINING AND IMPLEMENTING CONSTRUCTION ORIENTED GIS SYSTEM.**
- **PROJECT SETTING OUT IN FIELD**
- **PHOTOGRAMMETRIC AND REMOTE SENSING**
- **SUBSIDENCE MONITORING SURVEY**
- **GEODETIC POSITIONING SERVICES**
- **LAND MANAGEMENT CONSULTANCY**

(B) CIVIL AND BUILDING WORKS CENTRE

This Department remains at the forefront of Civil Engineering Design, Supervision and construction. It's successful records of judicious execution of projects and commercial implementation of new technology is second to none. The following Civil Engineering Operations are meticulously undertaken.

- i) Building/structure design and construction.
- ii) Design of road network and bridges.
- iii) Building Maintenance and Renovation
- iv) Water distribution designs and water resources services.
- v) Channel design and construction/flood control services.
- vi) General building works supervision and management
- vii) Dredging works consultancy
- viii) Coastal protection Consultancy

(C) **CONSULTANCY AND PROJECT/ESTATE MANAGEMENT**

NIELSON LIMITED comprises of competent team of Engineers and Environmental Resources profession, who have participated in all engineering Consultancy and project management.

The centre avails her privileged customers with the following services.

- i) Project/construction management
- ii) Architectural Consultancy
- iii) Land administration and Land use counseling
- iv) Estate planning and development services
- v) Estate support services



PROJECT PERSONNEL

Local Authorities, National Organization and Multinational Companies in Nigeria, look upon **NIELSON NIGERIA LIMITED** specialists as an invaluable resource. Our term of experience staff are available to compliment our in – house capabilities with our professional and technical skills.

Working with you, we will make the difference from concept to successful completion. During project planning, our consultants can determine specification/Quality procedure, operational procedure and safety guidelines in relation to the objectives. Once a project is underway, we work

with the team to achieve and maintain **PEAK** performance wherever the location, whatever the condition.

Whether it is a short-term requirement or an on-going contract, we offer reliability continuity, and the re-assurance of our years of experience.

In keeping with comprehensive range of service offered, **NIELSON** has personnel covering the diverse range of specialist abilities

The list and curriculum vitae of principal and key personnel in **NIELSON NIGERIA LIMITED** are hereby included. The Resume of Executive officers is equally included.

PROFILE OF COMPANY'S EXECUTIVES

CHAIRMAN: SURV SAM. N. AGWOR (mnis, fipan) is a Registered Surveyor who has tremendous experience in Academics, surveying services and public administration. He obtained a B.Sc. Degree in surveying from university of Lagos and an MSc degree of the University College London in 1980. He was a lecturer in the Department of Surveying, Rivers State University of Science and technology for many years. He is presently in full time private practices. He is a member of Nigeria institution of surveyor and many other professional bodies.

MANAGING DIRECTOR: MR TUNDE FAKOLOGBON is registered surveyor, who has many years working experience. He obtained HND and B. Sc. Degree in Surveying from the University Of Lagos and a M.Sc degree in Applied Geophysics from the University Of Port Harcourt. He was until 1998 the General Manager of a Flourishing survey company in Portharcourt. He has worked in every part of the Niger Delta and has used state of the art equipment. He is a member of Nigerian Institution of surveyor (mnis), Nigerian Hydrographic society (mnhs), Nigeria institute of Management (amnim), Nigeria Society of Phologrametry and Remote Sensing (mnsprs)



EXECUTIVE DIRECTOR: MR IDOWU ADEKUNLE, is registered surveyor. He has many years working experience as a field surveyor. He has work in all part of the Niger Delta. He obtained a B.Sc. degree from University of Lagos. He is an astute professional and a member of Nigerian Institution of Surveyors (mnis).

GENERAL MANAGER OPERATIONS ; OLATUNJI POPOOLA has 14 years working experience in Comprehensive Surveying, with a significant advantage knowledge of Digital image processing. He is also, at home with GPS data acquisition and processing. He obtained an H.N.D and B.Tech. Degree in Land Surveying from the Rivers State University of Science and Technology Port Harcourt. He is a member of Nigerian Institution of Surveyors.

HEAD OF INFORMATION TECHNOLOGY: MR WALE AINA, is a Registered Surveyor. He has many years working experience as a Field Surveyor, Quality Assurance Supervisor and a pioneer CAD operator. He participated in Digitizing of Shell Pet. Dev. Co. oil fields and DOS maps for her Port Harcourt and Warri operational bases. He possesses a B.Sc. Degree in Surveying from the University of Lagos. He is a member of Nigeria Institution of Surveyor and Computer Association of Nigeria.

CURRICULUM VITAE OF PRINCIPAL AND KEY PERSONNEL IN NIELSON NIGERIA LTD.

S/N	NAME	POSITION	INSTITUTION ATTENDED WITH DATES	PROFESSIONAL QUALIFICATION	NATIONALITY
1	FAKOLOGBON A. TUNDE	MANAGING DIRECTOR	UNIVERSITY OF PORT HARCOURT (1995-1997) UNIVERSITY OF LAGOS (1989-1991) FEDERAL POLYTECHNIC ADO-EKITI (1984-1989)	HND,B.SC, M.SC. MNIS, MNPRS, ANIM	NIGERIAN
2	IDOWU ADEKUNLE	EXECUTIVE DIRECTOR	UNIVERSITY OF LAGOS (1984-1989)	B.SC, ANIS	NIGERIAN
3	ADEWALE AINA	EXECUTIVE DIRECTOR (DATA BASE MANAGER)	UNIVERSITY OF LAGOS (1983-1988)	B.SC, ANIS	NIGERIAN
4	POPOOLA TUNJI	FIELD PROJECT SUPERVISOR	THE POLYTECHNIC IBADAN (1989-1991) FEDERAL SCHOOL OF SURVEY OYO (1992-1994)	HND, ANIS	NIGERIAN
5	ADIGUN OLATUNJI	PROJECT SURVEYOR	FEDERAL POLY ADO EKITI	HND	NIGERIAN
6	TUNDE IGE	CIVIL WORKS PROJECT SUPERVISOR	YABA COLLEGE OF TECHNOLOGY (1989-1990) UNIVERSITY OF PORT HARCOURT (1996-1998)	HND, B.SC	NIGERIAN
7	ROMANUS EKPE	PROJECT SUPERVISOR	FEDERAL POLYTECHNIC ADO-EKITI (1982-1987)	HND	NIGERIAN
8	ONYEDIMARA OSONDU	FIELD PROJECT ENGINEER (MECH) AND SAFETY OFFICER	INSTITUTE OF MANAGEMENT AND TECHNOLOGY ENUGU (1987-1992)	HND	NIGERIAN
11	FAKOLOGBON GBENGA	PROCUREMENT OFFICER	FEDERAL UNIVERSITY OF TECHNOLOGY AKURE (1987-1992)	B. Tech	NIGERIAN
12	AJIMAJASAN SHINA	FIELD PROJECT ENGINEER (ELECTRICIAL)	FEDERAL POLYTECHNIC ADO-EKITI (1992-1997)	HND	NIGERIAN
13	OYEDIRAN BIMBO	SURVEYOR	UNIVERSITY OF NIGERIA NNSUKA (1994 – 2000)	B. Sc.	NIGERIAN
14	IME GODWIN	SECRETARY	AKWA IBOM STATE POLYTECHNIC, IKOT OSURUA (2002-2005)	OND	NIGERIAN

LIST OF EQUIPMENTS	QUANTITY
Survey Equipment (Onshore)	
Level/geodetic level instrument	
Raytheon Echo Sounder	6
Current Meter	2
Pipeline magnetic locator (fisher)	1
Walkie-talkies	1
▪ SSB Radio Receivers	6
▪ Trimble 4000SE/ST G.P.S Receivers	
▪ Shokisha Total Station with data logger	2
▪ Wild T2,T1,t16 and Theodolite	3 Units
▪ D14,L/D14S, DI1600 EDMs	2
<u>CAD Equipment</u>	8
	3
• Hewlett Packard Designjet plotter 500/800C - A0 size	
• Calcomp 48" x 36" DIGITISER (AO)	
• Pentium based personal computers	1
• HP Colour printer	1
• Purlsa EL, 750 UPS	6
• A3 side Summagraphics digitizer	2
	6
	1



Software:

BENTLEY MICROSTATION 98

Bentley Geographics

Dos

Window 98

AutoCAD Release 14

AutoCAD Release 20



M/V NIELSON EXPLORER ITEMISED EQUIPMENT INVENTORY

DGPS Positioning System:

2 x Demodulators	<i>(1 Op + 1 Spare)</i>
1 x Receive only Dome c/w ACU	<i>(1 Op)</i>
2 x Satloc DGPS Receivers	<i>(1 Op + 1 Spare)</i>

PC Based Navigation System:

2 x Pentium 2 MHz Colour PC Computers	<i>(1 Op + 1 Spare)</i>
1 x Colour Graphics Printers	<i>(1 Op + 1 Spare)</i>
3 x SVGA Remote Colour Monitors	<i>(2 Op + 1 Spare)</i>

Atlas Deso 25 Echosounder:

1 x Hull mounted 33/210kHz Transducers	<i>(1 Op)</i>
2 x Deso 25 Recorder	<i>(1 Op + 1 Spare)</i>
1 x AML SVP – 16 Velocity Probe	<i>(1 Op)</i>

Sidescan Sonar System:

1 x DF-1000 100/500kHz Towfish	<i>(1 Op)</i>
1 x Klein 100kHz Towfish (backup system)	<i>(1 Spare)</i>
1 x Remote Controlled Winch	<i>(1 Op)</i>
1 x Delph-Sonar Recorder	<i>(1 Op)</i>
1 x Simrad HPR 300P USBL Topside	<i>(1 Op)</i>
2 x Simrad Minibeacons	<i>(1 Op + 1 Spare)</i>

EG & GX-Star Profiling System:

1 x SB216D Towfish	<i>(1 Op)</i>
2 x Remote Controlled Winch	<i>(1 Op)</i>
1 x Cable Counter	<i>(1 Op)</i>
1 x Spares Kit	<i>(1 Op)</i>
1 x Signal Processing Workstation	<i>(1 Op)</i>

Hull-Mounted Pinger Profilling System:

1 x 16 Element Transducer Array	<i>(1 Op)</i>
1 x Geopulse 5210A Transmitter	<i>(1 Op)</i>
1 x Elics Delph-2 Processor	<i>(1 Op)</i>

Soil Sampling:

6 Metre Vibrocorer	<i>(1 Op)</i>
4m Gravity Corer	<i>(1 Op)</i>
1 x Penetrometer, Shear Vane, Classification Tables	<i>(1 Op)</i>
1 x 3 Litre Van Veen Grab Sample	

List of Geotechnical Equipment

S/N	DESCRIPTION
1	Tripod Rig
2	Electrical CPT Machine (Piezocone) 20T
3	New CPT Rods
4	CPT Electrical Cones (piezo, seismic, pressuremeter, video)
5	Piezocone CPT/ Data logger system
6	Siesmic cone CPT/ Data logger System
7	Digital and Computer Control Triaxial Machine
8	Digital Consolidation Machine
9	CBR
10	Marshal Testing Machine
11	Electrical Oven
12	Sieve Shaker
13	Compaction Machine
14	CTM Machine
15	Rotary Drilling Pump Machine
16	Casagrande Apparatus
17	Manual Shear Box Machine
18	Motorized Shear Box Machine
19	Soil Moisture Mixer
20	5" Casing
21	3" Casing
22	6" Casing
23	4" Casing
24	Spring and Electrical Weight Balancing
25	SPT Rods
26	SPT Spoon
27	CPT Rods
28	Down hole Seismic system (Vane Test Apparatus)

**THE LIST OF SOME PREVIOUS PROJECT/JOB DONE THAT INVOLVES DIGITAL
MAPPING SERVICES**

S/NO	DESCRIPTION OF WORK SCOPE	CLIENT'S NAME / ADDRESS
1	DETAIL SURVEY OF S.P.D.C RA GOLF COURSE	AANDERAAH NIG. LTD. FOR S.P.D.C
2	POSITIONING SURVEY FOR PEARSON SURVEY OF 100KM PIPELINE	INTERSITE NIG. LTD. FOR AGIP
3	PRE-DREDGE SOUNDING SURVEY OF SPDC ORUBIRI FLOWSTATION ACCESS SLOT	TERINO SURVEYS FOR SPDC
4	PRE-DREDGE SOUNDING SURVEY OF SPDC ORUBIRI WELL 4 LOCATION ACCESS SLOT	TERINO SURVEYS FOR SPDC
5	PRE-DREDGE SOUNDING SURVEY OF SPDC ALAKIRI WELL 25 LOCATION ACCESS SLOT	TERINO SURVEYS FOR SPDC
6	PRE & POST DREDGE SOUNDING SURVEY OF EKEREMOR SHORE PROTECTION	GEO LINK SERVICES FOR OMPADEC
7	PRE & POST DREDGE SOUNDING SURVEY OF AGBERE-ODONI SHORE PROTECTION	GEO LINK SERVICES FOR OMPADEC
8	CONSTRUCTION OF 3/BEDROOM RESIDENTIAL BUNGALOW	ESSENTIAL GOODS AND SERVICES LTD
9	F/P SURVEY OF 40KM OGBIA OLOIBIRI ROAD	AANDERAAH NIG. LTD.
10	SUPPLY OF THEODOLITES, EDM AND ACCESSORIES	NEW OIL FIELD AND ALLIED SERVICES LTD. NOAS
11	PIPELINE CORROSION SURVEY (TEBIDAB – BASE MANIFOLD)	NEW OIL FIELD AND ALLIED SERVICES LTD. NOAS
12	DETAIL SURVEY OF BISENI 1,45 AND ACCESS ROAD	AANDERAAH NIG. LTD
13	ROOF REPAIR/RUG CLEANING AND INSTALATION OF ¾ DELIVERY NOZZLE	MOBIL OIL NIG. PLC
14	LAYOUT SURVEY AND PROPERTY SURVEY	INDIVIDUALS
15	DETAIL SURVEY OF I.A CABLE ROUTE	TOPTAY LTD FOR SPDC
16	INTEGRITY SURVEY OF AKRI KWALE	NOAS FOR AGIP
17	INTEGRITY SURVEY OF OSHA OGODA	NOAS FOR AGIP

S/NO	DESCRIPTION OF WORK SCOPE	CLIENT'S NAME / ADDRESS
18	INTEGRITY SURVEY OF SHELL WEST PIPELINE	CENTURY FOR SPDC
19	INTEGRITY SURVEY OF 24" & 25" BRASS MANI – BRASS TEM. P/LINE	NOAS FOR AGIP
20	ROUTE SURVEY OF ODAGWA 1 & 11 ELECTRIFICATION PROJECT	DAIHK FOR SPDC
21	ROUTE SURVEY OF EDEGBERI ELECTRIFICATION PROJECT	VEETEK FOR SPDC
22	ROUTE SURVEY OF RUMUEKPE ELECTRIFICATION PROJECT	DAIHK FOR SPDC
23	ROUTE SURVEY OF AKENFA ELECTRIFICATION PROJECT	VEETEK FOR SPDC
24	ELECTRIFICATION ROUTE SETTING OUT SURVEY FOR BUKUMA COMMUNITY	MORGREEN FOR SPDC
25	ROUTE SURVEY OF AHIA ELECTRIFICATION PROJECT	VEETEK FOR SPDC
26	BILLE ELECTRIFICATION DESIGN PROJECT SURVEY	POINT ENGINEERING LIMITED
27	AS – BUILT SURVEY OF 10" SANTABABRA TO TORA MANIFOLD	DATA MAT LTD / DEC OIL & GAS LTD
28	AS – BUILT SURVEY OF SECTION OF ECTL ROW FROM BONNY TERMINAL TO KC MANIFOLD	DATA MAT LTD / DEC OIL & GAS LTD
29	BOUNDARY RE-OPENING SURVEY FOR CCAGG PROJECT	POINT ENGINEERING FOR SPDC
30	POSITIONAL / AS-BUILT SURVEY OF BORE HOLE POINTS	DELTATEK FOR SPDC
32	AS-BUILT SURVEY OF STORM WATER DISCHARGE PIPELINE AT ENUGU	INTEGRATED QUALITY TECH. FOR NBL
33	CAWTHORNECHANNELL AGGPIPELINE VERIFICATION SURVEY	POINT ENG LTD FOR SPDC
33	PROVISION OF QUALITY ASSURANCE SERVICES ON CAWTHORNE CHANNEL AGG PIPELINES PROJECT	NISSCO FOR SPDC
34	BOUNDARY RE-OPENING/AS-BIULT SURVEY OF IBEWA – OBAGI AND OB118 – IBEWA GAS LINES	WECO FOR TOTAL FINA ELF
35	HYDROGRAPHIC SURVEY FOR PIPELINE RIVER CROSSING ON SANBREIRO RIVER	POINT ENG. FOR SHELL
36	SEABED SURVEY OF FPSO BARGE PROPOSED SISAR LOCATION	GLOBAL GAS & REFINING LTD.
37	SOIL INVESTIGATION OF AFAM VIPROJECT	DAEWOO FOR SHELL
38	12 X 20 KM OGBELE-RUMUJI PIPELINE SURVEY	POINT ENG LTD
39	TOPOGRAPHICAL SURVEY OFAFEMAI IPP PROJECT IN BENIN	ROCKSON ENG. LTD

PREVIOUS WORK DONE

Client Organization	Description
Consolidated Oil Nig Ltd	<p>Site and seabed survey at Otuo Field Niger Delta, Nigeria featuring Sidescan Sonar, echo Sounder, Sub-Bottom Profiler, Magnetometer, DGPS Real-Time Positioning, Kullenberg Corer</p> <p>The survey area covered 4km x 4km Date: August, 1998</p>
Consolidated Oil Nig Ltd	<p>Route Survey From Otuo to Texaco's Funiiwa-A Platform, Nigeria featuring Sidescan Sonar, Echo Sounder, Sub-Bottom Profiler, Magnetometer, DGPS Real-Time Positioning & Gravity corer</p> <p>The survey route covered 12 km by 0.5 km Date: August 1998</p>
Consolidated Oil Nig Ltd	<p>Site and seabed survey at Toju A-1x, Bella Fields Niger Delta, Nigeria featuring Sidescan Sonar, Echo Sounder, Sub-Bottom Profiler, Magnetometer, DGPS Real-Time Positioning & Kullenberg Corer</p> <p>The survey area covered 2km x 2km Date: September 1998</p>
Consolidated Oil Nig Ltd	<p>Route Survey From Toju A-1X to Bella Platform (MR.P), Bella Fields, Nigeria featuring Sidescan Sonar, Echo Sounder, Sub-Bottom Profiler, Magnetometer, DGPS Real-Time Positioning & kullenberg Corer</p> <p>Date: September 1998</p>
ELF Petroleum / Zitadel Nig Ltd	<p>Positioning for Amenam / Kpono Environmental Baseline Studies Phase I featuring real-time GPS positioning & navigation</p> <p>Date: June 1999</p>
ELF Petroleum / Zitadel Nig Ltd	<p>Positioning for Amenam / Kpono Environmental Baseline Studies Phase II featuring real-time GPS positioning & navigation</p> <p>August 1999</p>
Shell Petroleum Dev Co / MFKent / Kench Surveys	<p>Navigation Data Processing Odidi AGG Cable Route survey featuring Sidescan Sonar,</p>

	Echosounder, Sub-Bottom Profiler, Magnetometer, DGPS, etc (Nov 1999)
Shell Petroleum Dev Co / MFKent / Kench Surveys	Generation and Processing of Tidal data for Odidi AGG Cable Route survey featuring Sidescan Sonar, Echosounder, Sub-Bottom Profiler, Magnetometer, DGPS, etc (Nov 1999)
Shell Petroleum Dev Co / Zenith NigerGroup/ Sgeomatics Nig Ltd	Geophysical Interpretation & Processing Odidi AGG Cable Route survey featuring Sidescan Sonar, Echosounder, Sub-Bottom profiler, Magnetometer, DGPS, etc (June 1998)
Shell Petroleum Dev Co / Zenith NigerGroup/ Sgeomatics Nig Ltd	Magnetometer Hire for SPDC Odidi AGG Cable Route survey (June 1998)
Multinational Expertise Limited / Chevron Nigeria Limited	Site Survey at Obokun D Location featuring sidescan sonar, sub-bottom profiler, echsounder, magnetometer, DGPS and grab sampler (July 2000)
Consolidated Oil Nigeria Limited	Positioning of Rig “Don Walker”at Otuo Field (July 2000)
Consolidated Oil Nigeria Limited	Positioning of Rig “Perro Negro V”at Otuo Field (August 2000)
Consolidated Oil Nigeria Limited	Bella Field As-Built Survey featuring Magnetometer, DGPS and Sidescan Sonar using M/V Matador (October 2000)
Suffolk Petroleum Services Limited, Port Harcourt	Positioning & Anchor handling of Barge African Seaworker at SPDC’s Kalaekule Field for inspection of pipelines
Suffolk Petroleum Services limited, Port Harcourt	Positioning & Anchor Handling of BargeAfrican Seaworker at ADDAX Mímbo Field for repair of damaged 4” flowline
Suffolk Petroleum Services Limited, Port Harcourt	As-Built Survey at ADDAX Mimbo Field
Zenith Niger Group Co Ltd	Processing and reporting for 5 drilling site debris surveys at SHELL Pet. Dev. Co. Forcados-Yokri Field
Client / Notore	Pre-Dredged / As- Dredged / Buoys fixing / Dump site survey of Notore Channel, Onne, Eleme, Nigeria (October 2008)
Addax	Geophysical and Hazard Survey of ADRP at Addax offshore, Nigeria (May / April 2007)
Chevron / SPSL	Sea Bed Survey at Okan field, featuring Echo Sounder,Ssidescan Sonar, Magnetometer, Sub-Bottom Profiler, DGPS Real-Time positioning
Mobil / SPSL	Positioning & Anchor handling of Barge SPSL

	215 for Anchor Spread Management at Okan sat 2 jacket at Escravos offshore (May 2006)
Global Gas Refining Limited	Positioning of Laybarge W. B. P canaen and AHT-AMS Titan for anchor spread for relocation of 36"caisson project at Bonny fairway river – (February – March 2005)
Global Gas & Refining limited	Bathymetry Survey of the proposed 36"caisson relocation project site at Bonny far way river (February 2005)
SPDC / SPSL Limited	Pipelaying survey support on laybarge Rosamunde for 6"pipe at Forcados offshore
Mobil / BGI	Various Offshore Environmental Impact Assessment (EIA) Samples Acquisition Survey for Mobil (2006)
	Bathymetric Survey of NAFCON Channel Onne